



CONSORZIO DI GESTIONE  
AREA MARINA PROTETTA  
PORTO CESAREO

Consorzio di Gestione di

**Torre  
Guaceto**

Area Marina Protetta • Riserva Naturale dello Stato



Parco Nazionale  
del Gargano

# SCHEDE DEGLI ORGANISMI MARINI

DELLE  
AREE MARINE  
PROTETTE  
DELLA PUGLIA

[www.ampportocesareo.it](http://www.ampportocesareo.it)

[www.riservaditorreguaceto.it](http://www.riservaditorreguaceto.it)

[www.parcogargano.it](http://www.parcogargano.it)



# Alghe Algae

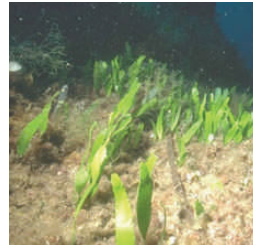
## Alghe verdi - Green algae



OMBRELLINO DI MARE  
*Acetabularia acetabulum*



*particolare*



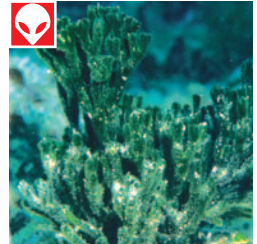
*Caulerpa prolifera*



*Caulerpa racemosa*



PALLA VERDE  
*Codium bursa*



CANDELABRO VERDE  
*Codium fragile*

### LEGENDA



Specie aliena



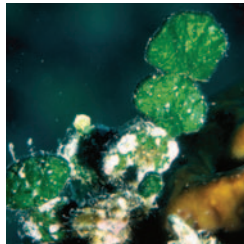
Specie protetta



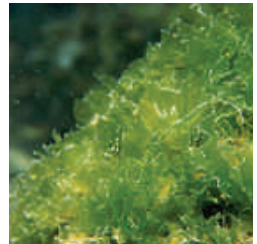
Attenzione alla  
pinneggiata



Non toccare



FICO D'INDIA MARINO  
*Halimeda tuna*

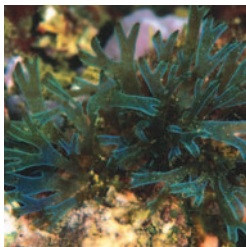


LATTUGA DI MARE  
*Ulva lactuca*

# Alghè

## Algae

### Alghè brune - Brown algae



NASTRO A FORCELLE  
*Dictyota dichotoma*



CODA DI PAVONE  
*Padina pavonica*

### Alghè rosse - Red algae



*Laurencia obtusa*



LICHENE DI MARE  
*Lithophyllum frondosum*



ROSA DI MARE  
*Peyssonnelia sp.*



*Sphaerococcus coronopifolius*

# Fanerogame

## Seagrass

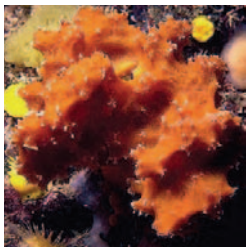


*Cymodocea nodosa*



*Posidonia oceanica*

# Spugne Sponges



*Acanthella acuta*



*Agelas oroides*



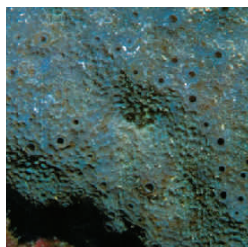
*Aplysina aerophoba*



*Axinella cannabina*



*Axinella polypoides*



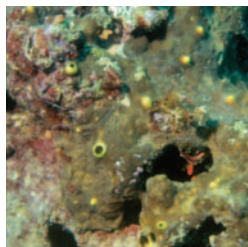
*Cacospongia* sp.



*Chondrilla nucula*

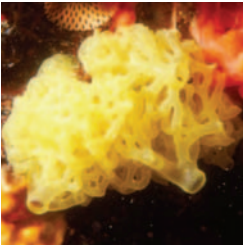


*Chondrosia reniformis*

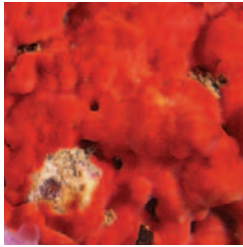


*Cliona* sp.

# Spugne Sponges



*Clathrina clathrus*



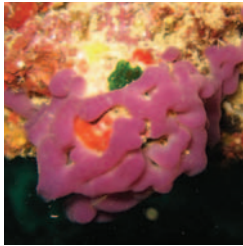
*Crambe crambe*



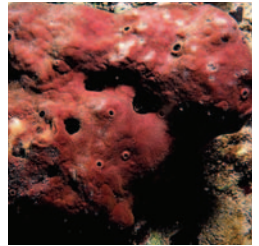
*Dysidea avara*



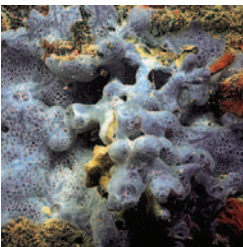
*Haliclona mediterranea*



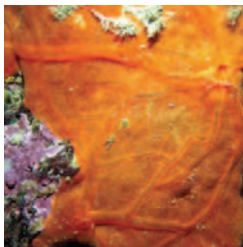
*Oscarella lobularis*



*Petrosia ficiformis*



*Phorbastenia tenacior*



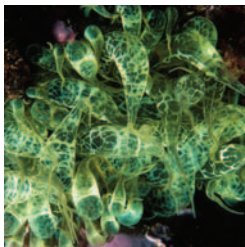
*Spirastrella cunctatrix*

# Antozoi

## Anthozoans



POMODORO DI MARE  
*Actinia equina*



ANEMONE BRUNO  
*Aiptasia mutabilis*



ATTINIA ALICE  
*Alicia mirabilis*



*Balanophyllia*  
*europaea*



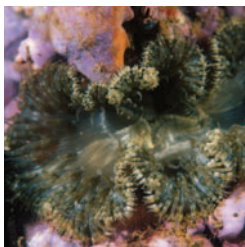
*Caryophyllia*  
*smithii*



CERIANTO  
*Cerianthus membranaceus*



CERIANTO  
*Cerianthus membranaceus*



ATTINIA CALICE  
*Cereus pedunculatus*

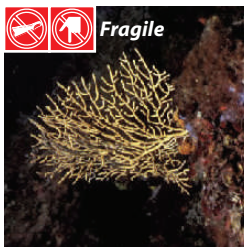


MADREPORA  
*Cladocora caespitosa*

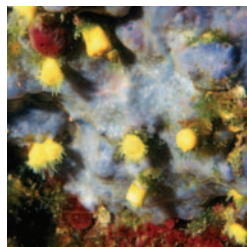
## Antozoi Anthozoans



ANEMONE DORATO  
*Condylactis aurantiaca*



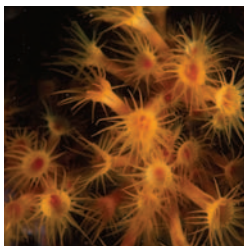
GORGONIA GIALLA  
*Eunicella cavolinii*



*Leptosammia pruvoti*



*Maasella edwardsi*



MARGHERITA DI MARE  
*Parazoanthus axinellae*



GORGONIA ROSSA  
*Paramuricea clavata*

## Ascidie Ascidians



*Aplidium conicum*



CLAVELINA  
*Clavelina lepadiformis*



PATATA DI MARE  
*Halocynthia papillosa*

## Policheti Polychaetes



BISPIRA  
*Bispira volutacornis*



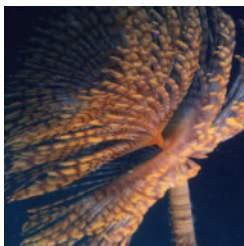
FILOGRANA  
*Filograna implexa*



VERMOCANE  
*Hermodice carunculata*



VERME CIUFFO BIANCO  
*Protula tubularia*



SABELLA  
*Sabella spallanzanii*



SERPULA  
*Serpula vermicularis*

## Echiuridi *Echiurans*

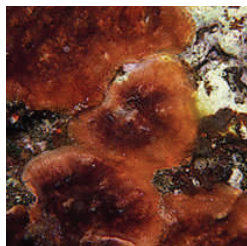


BONELLIA  
*Bonellia viridis*

## Briozoi Bryozoans



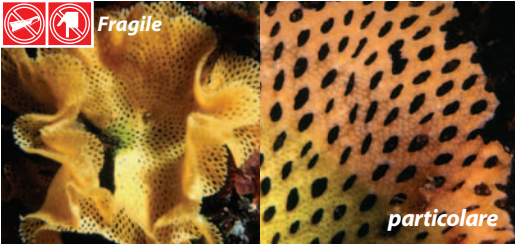
FALSO CORALLO  
*Myriapora truncata*



SCHIZOBRACHIELLA  
*Schizobrachiella sanguinea*



## Briozoi Bryozoans



TRINA DI MARE  
*Sertella septentrionalis*

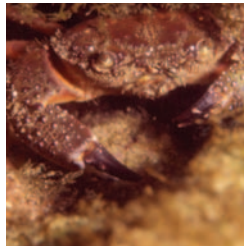


CORNA D'ALCE  
*Pentapora fascialis*

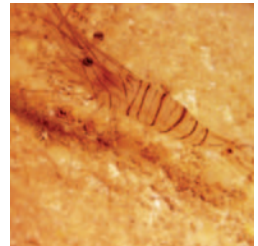
## Crostacei Crustaceans



BERNARDO L'EREMITA  
*Dardanus calidus*



FAVOLLO  
*Eriphia verrucosa*



GAMBERETTO MAGGIORE  
*Palaemon serratus*



ARAGOSTA  
*Palinurus elephas*



*Periclimenes scriptus*



MAGNOSELLA  
*Scyllarus arctus*

# Echinodermi

## Echinoderms



GIGLIO DI MARE  
*Antedon mediterranea*



OLOTURIA  
*Holoturia tubulosa*



RICCHIO MASCHIO  
*Arbacia lixula*



RICCHIO MELONE  
*Echinus melo*



RICCHIO FEMMINA  
*Paracentrotus lividus*



RICCHIO MONACO  
*Sphaerechinus granularis*



STELLA ROSSA  
*Echinaster sepositus*



*Marthasterias glacialis*



STELLA PETTINE  
*Astropecten sp.*

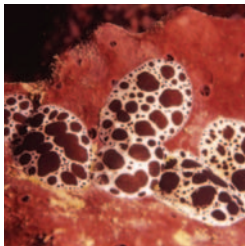
# Molluschi

## Molluscs

### GASTEROPODI - *Gastropods*



LEPRE DI MARE  
*Aplysia sp.*



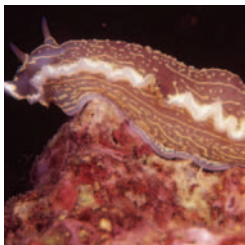
VACCHETTA DI MARE  
*Discodoris atromaculata*



FLABELLINA  
*Flabellina affinis*



*Hypselodoris tricolor*



*Hypselodoris valenciennesi*



CIPREA - PORCELLANA  
*Luria lurida*



*Phyllidia flava*

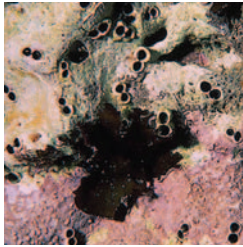
# Molluschi

## Molluscs

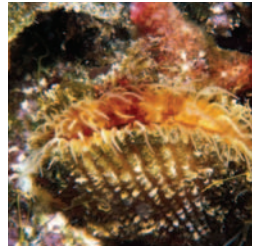
### BIVALVI - Bivalves



PIEDE DI CAPRA  
*Arca noae*



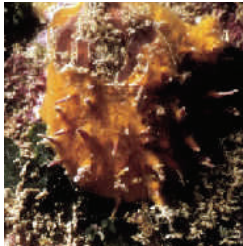
*Gastrochaena dubia*



LIMA SPINOSA  
*Lima lima*

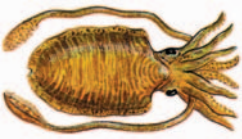


COZZA PENNA  
*Pinna nobilis*



SPONDILO  
*Spondylus gaederopus*

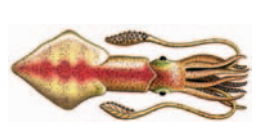
### CEFALOPODI - Cephalopos



SEPPIA  
*Sepia officinalis*



POLPO  
*Octopus vulgaris*



CALAMARO  
*Loligo vulgaris*

# Pesci Fishes



RE DI TRIGLIE  
*Apogon imberbis*



CASTAGNOLA  
*Chromis chromis*



DONZELLA  
*Coris julis*



DENTICE  
*Dentex dentex*



SPIGOLA  
*Dicentrarchus labrax*



SARAGO PIZZUTO  
*Diplodus puntazzo*



SARAGO MAGGIORE  
*Diplodus sargus*



SARAGO FASCIATO  
*Diplodus vulgaris*



CERNIA BRUNA  
*Epinephelus marginatus*



CAVALLUCCIO MARINO  
*Hippocampus guttulatus*



CEFALO COMUNE  
*Mugil cephalus*



TRIGLIA DI SCOGLIO  
*Mullus surmuletus*

# Pesci Fishes



MURENA  
*Muraena helena*



OCCHIATA  
*Oblada melanura*



SALPA  
*Sarpa salpa*



SCORFANO NERO  
*Scorpaena porcus*



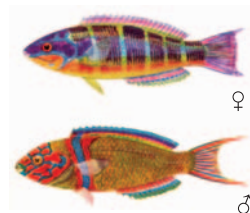
CORVINA  
*Sciaena umbra*



PERCHIA  
*Serranus scriba*



ORATA  
*Sparus aurata*



DONZELLA PAVONINA  
*Thalassoma pavo*



PEPERONCINO  
*Trypterion tripteronotus*

# Distribuzione degli organismi sul fondale: ORGANIZZAZIONE DEI PIANI



**PIANO SOPRALITORALE**  
zona di umettazione

**PIANO MESOLITORALE**  
zona di alta e bassa marea

**PIANO INFRALITORALE**  
fino a 45 m  
limite delle alghe fotofile  
e delle fanerogame



Parco Nazionale  
del Gargano

[ampisoletremiti@parcogargano.it](mailto:ampisoletremiti@parcogargano.it)

Consorzio di Gestione di

**Torre  
Guaceto**



Area Marina Protetta - Riserva Naturale dello Stato

[info@riservaditorreguaceto.it](mailto:info@riservaditorreguaceto.it)



CONSORZIO DI GESTIONE  
AREA MARINA PROTETTA  
**PORTO CESAREO**

[info@areamarinaprotettaportocesareo.it](mailto:info@areamarinaprotettaportocesareo.it)